

A UNION
FOR ALL
STUDENTS

A guide to your

Students' Union

Welcome
2025





50% OFF

PIZZAS & SIDES

WHEN YOU SPEND £40 OR MORE



USE CODE: **APPUNI50**



Domino's®

T&Cs apply, participating stores only.

WE'RE HIRING

FOR MORE INFORMATION VISIT

JOBSATDOMINOS.CO.UK



Domino's

Domino's

Domino's



Domino's®

WE GOT THIS

Hi, we're Bristol Students' Union!

We sit at the heart of all the best bits of student life.

When you join the University of Bristol, you automatically become a member of Bristol Students' Union (Bristol SU). We're an independent charity led by Full-Time Officers (current students, elected by you) who work to improve your university experience, help you make change and ensure your voice is heard in big university decisions.

What do we do?

We're here to represent your academic interests and help drive change for things that matter to you.

We are the home of student groups, relaxing study spaces, inclusive events, and volunteering opportunities.

Also, we're here to support you by providing academic advice, housing advice and so much more!

Welcome to your Students' Union.

Easy ways to get involved!

- ☐ JOIN A STUDENT GROUP
- ☐ COME TO A DEMOCRATIC MEETING (FOR EXAMPLE, STUDENT COUNCIL)
- ☐ BECOME A COURSE REP
- ☐ SUPPORT A CAMPAIGN THAT REPRESENTS YOU
- ☐ ATTEND AN SU EVENT



Your Full-Time Officer Team



Your Full-Time Officers are elected in TB2 to lead Bristol SU.

They work full-time to drive change, champion student priorities, and improve student life at the University of Bristol.



Katie Poyner
she/her

**Union
Affairs**

✉ su-union-affairs@bristol.ac.uk



Lucy Pears
she/her

**Student
Living**

✉ su-student-living@bristol.ac.uk



Sharan Khemlani
she/her

**Postgraduate
Education**

✉ su-pg-education@bristol.ac.uk



Mia Stevens
she/her

**Undergraduate
Education**

✉ su-ug-education@bristol.ac.uk



Linlu Ye
she/they

Equality, Liberation & Access

✉ su-ela@bristol.ac.uk



Ella Lovibond
she/her

Sport & Student Development

✉ su-sport-development@bristol.ac.uk



Jessie Yeung
she/they

International Students

✉ su-international@bristol.ac.uk

Officer Collective Priorities for this year:



Student Poverty



Empowering Communities



Academic Satisfaction

FIND OUT MORE
ABOUT OFFICER
PRIORITIES AND
WHAT THEY ARE
WORKING ON HERE



[BRISTOLSU.ORG.UK/OFFICERS](https://bristolsu.org.uk/officers)

Student Groups

With over 300 student groups, and loads of opportunities on offer, there is always something for everyone!

Did you know that most students join two or more groups during their time at Bristol? Explore new interests and find your community of like-minded people.



Meet new people and find your community.



We're here to help you settle into Bristol and find a sense of belonging outside of your course and accommodation. After all, it's important to unwind from studying.

Joining student groups is a fantastic way to meet like-minded people, discover your passions, and build a real sense of belonging. If you can't find a group that suits you, you could always set one up!

If you're interested in meeting people within your course, why not join a student group that covers your academic department? You'll connect with students in your year or get advice from those who have been here longer.

How do I decide what group to join?



Give It A Go!

Through this programme, our student groups offer taster sessions at the start of each term. This means you can try it out before committing to a membership! We are also hosting a Give It A Go Takeover Day on **Friday 19 September**, where all our spaces will be packed with Give It A Go events!

Welcome Fair

Chat to hundreds of student groups and find out what interests you at our Welcome Fair on **Saturday 27 September**. While you're there keep an eye out for our Gold Accredited groups who have gone above and beyond for their members!



USE OUR GROUP FINDER TO DISCOVER A STUDENT GROUP THAT'S RIGHT FOR YOU.

[BRISTOLSU.ORG.UK/STUDENT-GROUPS](https://bristolsu.org.uk/student-groups)

Sports Clubs

Play the sport you love or try something new by finding your team at Bristol SU!

With over 70 sports clubs at different levels, there are plenty of opportunities for everyone. Whether you want to represent the university competitively or just have fun through our Intramural programme, we've got you covered.

British Universities & Colleges Sport (BUCS)

BUCS is the national governing body for higher education sports in the UK. It's through these leagues and competitions that our sports clubs compete at the highest level across the UK and even Europe! Join a sports club and compete for Bristol this year.

If you just want to play at a recreational level, check out our Intramural Sports teams!





Sports for All

Whether you're a seasoned player or just fancy trying out something new, Intramural Sport is open to all students. With 250+ teams across 25 social leagues, it's a great way to stay active, meet people, and have fun. This is all without the intense training or big joining fees.

You can join as part of your hall, society, or just with mates. Last year, over 3,000 students got involved - why not be one of them?

Our Intramural Sport leagues include:

- Football (11, 8, 7, 6 and 5a-side)
- Netball
- Basketball
- Volleyball
- Tennis
- Badminton
- Cricket



TURN UP AND PLAY,
FIND A TEAM HERE!



[BRISTOLSU.ORG.UK/INTRAMURAL](https://bristolsu.org.uk/intramural)

Intramural Sport

Volunteering

Make a difference and engage with your local community.

BRISTOL STUDENTS VOLUNTEERED OVER 22,000 HOURS OF THEIR TIME LAST YEAR!

We work with charities, student-led projects and other organisations across Bristol to give you access to volunteering opportunities that make a real impact in the community. Whether you're passionate about the environment, education, or social justice, there's something for you.

Volunteering is a great way to:

- Develop new skills
- Gain experience and build your future
- Meet like-minded people
- Boost your CV

Explore current opportunities on our website or chat with groups and charities at the Welcome Fair on **Saturday 27 September**. Or pop along to the Volunteering Fair in the Anson Rooms on **Wednesday 8 October**!

Feel good and do good by speaking to us about volunteering!

Are you wondering how you can make the uni, the SU and the wider world more sustainable?

Why don't you look for a sustainable volunteering position, for example a gardening project or as part of a climate action campaign.

BROWSE ALL OUR VOLUNTEERING OPPORTUNITIES ON THE HUB!



VOLUNTEERING.
BRISTOLSU.ORG.UK

Bristol SU Welcome Fair

Join us at the Welcome Fair
on Saturday 27 September!

Explore everything Bristol SU
and the city have to offer at our
biggest event of the year.

09:30-18:00 (Last entry 17:00)

Parrys Lane, Clifton

YOU'RE
INVITED!



FIND OUT MORE
[BRISTOLSU.ORG.UK/WELCOME-FAIR](https://bristolsu.org.uk/welcome-fair)



The Bristol SU Welcome Fair is the perfect opportunity to check out all the activities and groups you can get involved in during your time at university.

For all University of Bristol Students, here is what you can expect:

- 300+ student groups hosting stalls with info about memberships and upcoming events.
- Give It A Go arena with student group sessions you can get involved in.
- Bristol SU Shop pop-up selling the latest university merch.
- Local venues, national brands and food stands with free giveaways and prize draws.
- Bristol SU Marketplace so you can bag the best student deals on houseplants, room décor and more.
- Local food and drink vendors.
- Employment, volunteering and networking opportunities!
- The SU Bar will be open for you to grab a drink with your new friends.



Quiet Hour

09:30-10:30 is our quiet hour at the Fair. During this time students with access requirements will be able to make the most of the event before the volume starts to rise and crowds build. There will be additional staff on hand to support your experience during this hour and care givers are also welcomed.

Events

What's on at Bristol SU!

There's always something happening! From craft workshops and club nights to sustainable fairs and student socials. Check out our full events calendar online and filter by your interests.



Community Events

Often in partnership with local artists and student groups, we host community building events across campus and in our spaces. From chilled hangouts in the Living Room, to spaces takeovers, there's something for everyone to get involved in.



Day Trips

Want to explore beyond Bristol? Join one of our regular day trips across the Southwest and beyond. Keep an eye on the events calendar to see where we're heading next!



OUR EVENTS CALENDAR!
[BRISTOLSU.ORG.UK/EVENTS](https://bristolsu.org.uk/events)

WE HOSTED OVER
250 EVENTS LAST
YEAR, WITH OVER
30,000 ATTENDEES!



Student Group Special Events

From student balls to boxing nights, our Events team supports big events in the Anson Rooms that bring all the energy.

Our Headliners programme is full of large-scale events that bring students together and make an impact. New for this year, our Special Events Spotlight Series will include events like open mics, comedy or fringe-style theatre shows which will take place in the Anson Rooms Bar.

Our Special Events programme is student-led - keep an eye on our website for the latest information.

Or if you've got something in mind email us at:
bristolsu-events@bristol.ac.uk

Bristol SU Spaces

Your Spaces. Your SU.

We're based across two main buildings: Senate House and The Richmond Building. Our Community Spaces are a place to study, chill, create, and connect.

Community Spaces

TRB

The Richmond Building

SH

Senate House



SH

The Beckford – Grab a bite or a drink at the bar, with weekly deals all year round.



TRB

The Balloon Bar – Hosting student group events Mon-Fri with weekly deals year-round.



SH

Bristol SU Living Rooms – Free hot drinks, microwaves, comfy sofas, and a calm space to chill or study.



SH

Swap Shop – In Living Room 1, donate or pick up free clothes or food.



TRB

SH

Sensory Rooms – Located in The Richmond Building and Senate House. Visit our website for access.



SH

The Loft – Ideal for studying, group work, committee meetings, or lunch breaks with free microwaves.



WANT THE FULL TOUR? CHECK OUT OUR INTERACTIVE ROOMS AND SPACES PAGE FOR PHOTOS, OPENING TIMES, AND BOOKING INFO.

[BRISTOLSU.ORG.UK/ABOUT-US/VENUES](https://bristolsu.org.uk/about-us/venues)



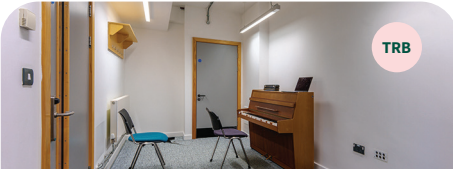
Further Spaces



The Anson Rooms – Our biggest event space and home of our extensive Special Events programme.



Got a question? Head to the 5th floor to chat with your Officers or our staff at the Welcome Desk.



Music Rooms – Play, practice and jam. Free for your use!



The Pegg and Winston Theatres – Home of student theatre, dance, and live shows.



Bristol SU Shop – Pick up your Bristol merch on the Ground Floor.

TRB

The Richmond Building

SH

Senate House

Student Voice

Your voice is extremely important to us and shapes everything we do.

OVER
800
REPS!

Every year you elect:

- ☐ 7 Full-Time Officers (FTOs)
- ☐ 18 Faculty reps
- ☐ 6 Student Community Organisers.
- ☐ 800 Academic Reps

They represent you across all levels of the university and you can run for these roles too!

Academic Representation

Bristol SU supports and represents your academic interests throughout your time at university.

The Bristol SU Academic Representation team supports over 800 academic representatives to identify and create positive changes for students, improving their academic experience. So that this can happen, we have a range of different roles on offer, elected in September and March, and you can be one of them!

Who represents you in academia?

Full Time Officers

Two of the Full-Time Officer roles focus on education and your academic interests. They are the UG Education Officer and PG Education Officer, and work year-round to make change on a bigger scale.

SCAN TO
FIND OUT
MORE!



Faculty Reps

These representatives gather feedback from School and Course Reps, and bring students' voices to school, faculty and university level meetings.

School Reps

School Reps gather feedback from course reps and attend faculty level meetings to representing school.

Course Reps

The go-to voice for your course. They collect feedback and work with staff, school reps, faculty reps and the academic representation team to make your course better.

All reps are elected by you and trained by our Academic Representation Team.

BRISTOLSU.ORG.UK/STUDENT-VOICE

Democracy



Your voice can make changes for students.

We're a democratic organisation, which means you, the students, shape what we do. Whether you want to vote, campaign, or lead, there are loads of ways to get involved.

Ways to make your voice heard:

- Vote or stand in the Bristol SU Elections.
- Vote on motions at student council and the Annual Members Meeting (AMM) where you can debate changes and hold your Officer team to account.
- Connect with a Student Community Organiser and make change on campus.
- Post to our online Ideas Board, where we'll help you transform your idea into a campaign.

With over 30,000 students, your voice is powerful. Let's make change together.

Student Community Organisers

New for this year, Student Community Organisers are student leaders who connect communities and drive change across campus.

They work together to identify the issues students face and take action to make things better on campus.

Each organiser reflects a different marginalised student community, helping ensure our work is inclusive and responsive to student needs. An exciting step in how we support student-led change at Bristol!

Make sure your voice is heard, connect with them and make change!



Support

We're here at every step of your university journey!

From your first day in Bristol to your final exam, we've got your back. Whether it's academic advice, housing help, or wellbeing support, Bristol SU is here to make sure you're supported throughout your time at uni.



EXPLORE ALL
OUR SUPPORT
SERVICES VIA OUR
SUPPORT CENTRE.



[BRISTOLSU.ORG.UK/SUPPORT-CENTRE](https://bristolsu.org.uk/support-centre)

Academic Advice

Are you struggling with plagiarism issues, exceptional circumstances, or need guidance with academic appeals and complaints? Our expert team is here to support you.

Welcome Desk

Have you got a question for our friendly staff team or a Full-Time Officer? Pop up to the 5th Floor of Senate House to the Welcome Desk.

Wellbeing Support

From mental health to managing stress, our website can help guide you to the correct and trusted support.

Bristol SU Lettings

Looking for a place to live? Bristol SU Lettings Agency can help you find a home.

Housing Advice

Launching later this term, this service will offer even more support around renting and housing rights.

Still can't find what you need?

Drop us a line at bristolsu@bristol.ac.uk or visit the Welcome Desk.



Non-judgemental and confidential support for you and your academic interests.

Whether you're dealing with plagiarism concerns, exceptional circumstances, academic complaints or thinking about an appeal, our Academic Advice team is here to help. We offer free, non-judgemental guidance to support you through any university process - big or small.

Just speak to a member of our Academic Advice team for some free and friendly guidance.



GET IN TOUCH
[BRISTOLSU.ORG.UK/
ACADEMIC-ADVICE](https://bristolsu.org.uk/academic-advice)

Academic Advice



Bristol is your home while you study here.

We want to make sure that finding the accommodation that is right for you is simple and stress-free. This is where our friendly and informed Lettings agency can help!

RENT WITH CONFIDENCE

We are part of the Arla Property Mark and the Property Redress Scheme.

UNRIVALLED TENANT SUPPORT

24hr emergency support for all our managed tenants and easy online maintenance reporting.

LOTS ON OFFER!

We have lets for a number of properties available across the city. Find us online at **bristolsulettings.co.uk**

Housing Advice Service

Free, independent and confidential housing advice for students at the University of Bristol.



The team is here to help you feel more confident during your first few years of independent living and help you understand your rights and responsibilities as a tenant.

They can support you through any housing problems you might face, no matter where you are living while at university.

Our Housing Advice Service is here to help you with:

- Finding housemates
- Finding accommodation
- Understanding tenancy agreements
- Advice on managing bills and housing costs
- Dealing with housing emergencies



FIND OUT MORE!
[BRISTOLSU.ORG.UK/
HOUSING-ADVICE](https://bristolsu.org.uk/housing-advice)

Wellbeing

Your wellbeing matters and we're here to support you.

University life can be exciting but also overwhelming. We're here to help you look after your wellbeing in ways that work for you.

Here's what's available:

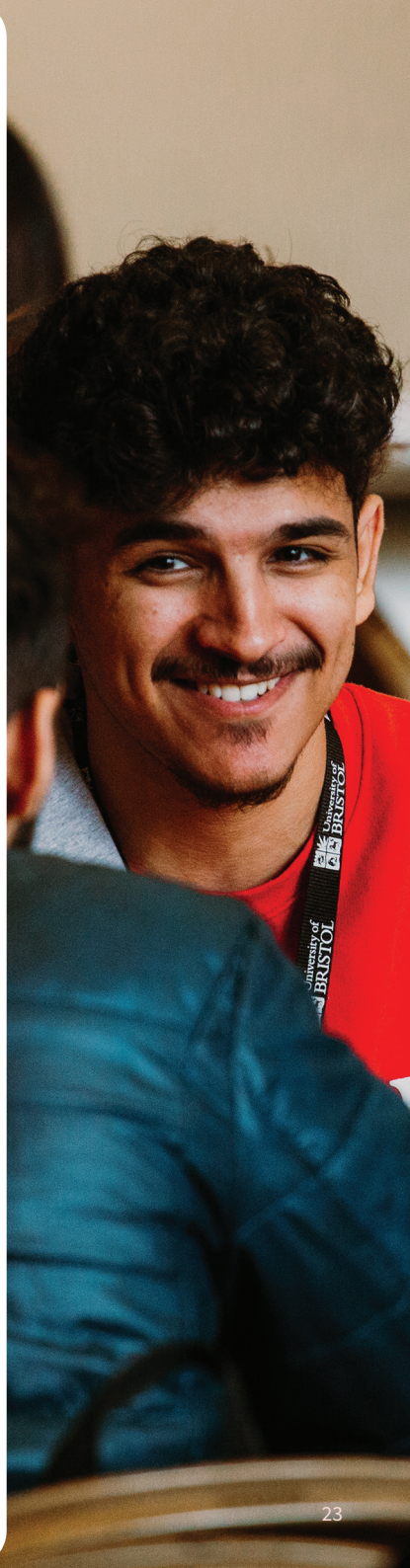
- **Join a student group or society**
Make friends, discover a new passion, and boost your wellbeing.
- **Find a community**
We run community events throughout the year, where you can unwind, meet new people, and take part in creative and social activities. Keep an eye on our What's On!
- **Sexual health support**
We run regular STI screenings and drop-ins. They're free, confidential, and friendly.

University Wellbeing Support Hub

allows you to access a wide range of wellbeing services and resources through the university's central support hub. Complete a support request form or contact them below.



BRISTOL.AC.UK/
STUDENTS/SUPPORT



Looking after yourself and your mates!

We take a harm reduction approach to drugs and alcohol – meaning we focus on safety, not disciplinary action. We work with the university, the local council and partners like Horizons and their student focused service The Drop, to help you stay safe when using drugs and alcohol.

If you're struggling with drugs or alcohol, you can speak to university wellbeing staff or visit The Drop in confidence. They have support in place to help you deal with any issues you or someone you know may be facing.

We also support the Bristol Nights campaign, promoting safer nights out across the city.



Need support on any of the following?

- Drugs and alcohol
- Sexual health and violence
- Housing
- Money and gambling
- Mental health and wellbeing
- Digital wellbeing



SCAN FOR SUPPORT
[BRISTOLSU.ORG.UK/SUPPORT-
CENTRE/HEALTH-AND-WELFARE](https://bristolsu.org.uk/support-centre/health-and-welfare)

Harm Reduction and Safer Nights

The only place for official university merch



The
Richmond
Building,
Mon-Fri,
10:00-16:00



Bespoke
printing
available for
personalised
merch



GET YOUR UOB STASH,
STATIONERY AND MORE

BRISTOLSUSHOP.COM

 **Bristol SU Shop**

Bristol SU Academic Year Planner

REFER
TO
ME!

Plan your academic year with Bristol SU.

Welcome to the University of Bristol! There's so much to look forward to this year, so make the most of your time by staying organised. Use this planner to keep track of key Bristol SU events, opportunities, and deadlines.

SEPTEMBER

14–19th:
Welcome Week

27th:
Welcome Fair

15–29th:
TB1 Elections
Nominations Period

OCTOBER

6–9th:
TB1 Elections Vote Week

8th:
Volunteering Fair

22nd:
Part-Time Work Fair

NOVEMBER

6th:
Student Council

20th:
Housing Fair

17–21st:
International
Students Week

DECEMBER

11th:
Student Council

Exam Wellbeing Support
throughout the month

JANUARY

19th:
Big Bristol SU
Survey Opens

21st:
Refreshers Fair

26th:
TB2 Elections Nominations
period starts

FEBRUARY

19th:
Annual Members Meeting

27th:
TB2 Elections
Nominations period ends

Special Events and
Day Trips throughout
the month

Bristol SU Academic Year Planner



Plan your academic year with Bristol SU.

Welcome to the University of Bristol! There's so much to look forward to this year, so make the most of your time by staying organised. Use this planner to keep track of key Bristol SU events, opportunities, and deadlines.

MARCH

9–13th:
TB2 Elections Vote Week

16–30th:
Rate My
Group Survey

18th:
Derby Day

APRIL

Bristol SU:50 Most
Influential Students

Special Events and
Day Trips throughout
the month

MAY

26 May–6th June:
Committee Fest

Exam Wellbeing Support
throughout the month

*Some dates may be subject to change

CURIOUS TO SEE
OUR KEY DATES? BROWSE
OUR FEATURED EVENTS!



[BRISTOLSU.ORG.UK/EVENTS](https://bristolsu.org.uk/events)

Stay connected



bristolsu.org.uk



bristolsu@bristol.ac.uk



[bristol_su](https://www.instagram.com/bristol_su)



[bristol_su](https://www.tiktok.com/@bristol_su)



[UoB Students' Union](#)



0117 331 8600

Senate House,
Tyndall Avenue, Bristol,
BS8 1TH

The Richmond Building,
105 Queens Road, Clifton,
Bristol BS8 1LN

